

452 Hackney Road

Where: Cambridge Heath, London. Who For: London Wharf. What: 18 residential units, 430 sqm commercial floorspace.

CMA
PLANNING



452 Hackney Road

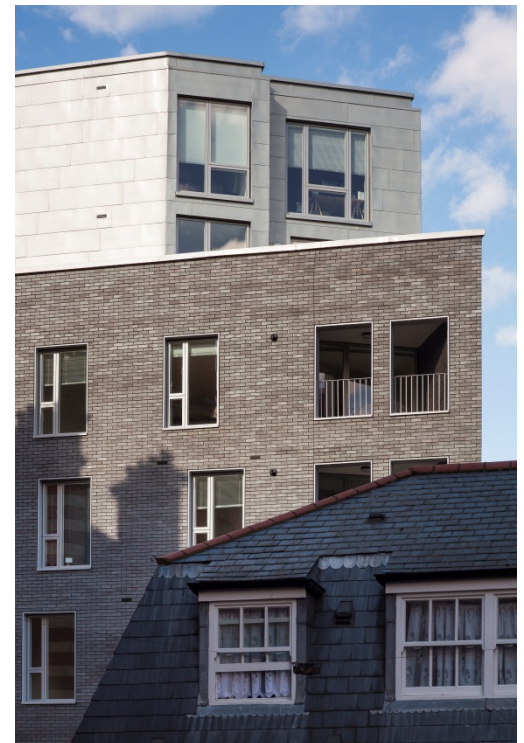
Architect: Julian Cowie Architects. ©TimCrocker

CMA Planning were asked by London Wharf to secure planning permission for this interesting mixed-use scheme on a site in East London, previously occupied by a run down / derelict petrol filling station. The brownfield site sits in a regeneration area and the proposal will act as a marker building for this part of Hackney Road, creating a high quality living environment within an inspiring and sustainable development.

Previous proposals for a smaller scheme had been dismissed at appeal, but CMA were able to take the precedents established to ultimately secure permission for a bigger, more adventurous scheme, which still managed to respect the adjoining Listed Building. As part of the planning application process extensive consultation was carried out with the Borough, whilst a detailed Planning Statement addressing the policy issues and regeneration benefits that the scheme would bring was produced along with other assessments which accompanied the application.

CMA worked on the project, advising on the approach and planning strategy, securing approval from the London Borough of Tower Hamlets in April 2008. The scheme also won the Project Winners Award at the 2008 Housing Design Awards.

www.designforhomes.org/hda/index.html



CMA Planning

113 The Timberyard, Drysdale Street, London, N1 6ND
www.CMA-Planning.co.uk